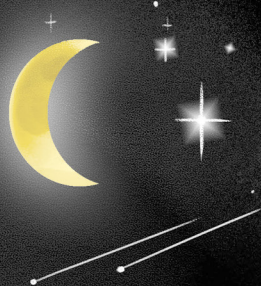


# Short and sharp: haikus

Not all poems have to rhyme. Haikus are very short, non-rhyming poems. They were invented hundreds of years ago in Japan, and are still written today.



A haiku is usually three lines long.

*This late summer night  
the narrow new moon swims up:  
an octopus eye.*

Its first line has five syllables, the second has seven syllables, and the third has five – making a total of 17 syllables.

Haikus traditionally include at least one word or phrase that refers to a season or time of year. This part of the haiku is known as a kigo.

Snow deepens outside.  
Sleepy student, wakeful mouse –  
both nibble their books.

In this haiku, “snow deepens” is a kigo. It shows that the poem takes place in the wintertime.

You could use some of these kigos in your poems.

Write your own haikus here:

Blank writing area with dotted lines for a haiku.

Blank writing area with horizontal lines.

Blank writing area with a grid pattern.

Blank writing area with a grid pattern.

Blank writing area with horizontal lines.

### SPRING WORDS

Foals  
Mud  
Daffodils  
Thawing ice  
Sparrows twittering  
Green buds  
Bluebells  
Racing lambs  
FLYING KITES  
Spring rain  
Cherry blossoms

### SUMMERY WORDS

Watermelons  
short nights  
FIREWORKS  
Bare feet  
Cicadas  
THUNDERSTORMS  
Billowing clouds  
Mosquitos  
Hot afternoons  
Mowing grass  
Sunflowers  
SHADY TREES  
Swimming pools

### AUTUMNAL WORDS

Mist  
Migrating geese  
Falling chestnuts  
HAYSTACKS  
Bonfires  
Mushroom gathering  
Harvest moon  
Lamplight  
CRISP AIR  
LINGERING DUSK  
Red and yellow leaves  
Spiderwebs  
pumpkins

### WINTERY WORDS

Bare branches  
Lost mittens  
Holly leaves  
ICE  
FROZEN STREAMS  
Withered fields  
Gingerbread  
Runny noses  
Fireplace  
Frosted windows  
Fresh snow  
Ice skates  
Blizzard