

Year 3/4 Map

Only one adult per family may enter the site.

Wherever possible, try to only bring children on site who are attending school.

Keep children by your sides at all times.

Maintain strict 'social distancing' of at least 1m between families at all times whilst on site.

Leave the site quickly and safely after dropping off/collecting your child/ren.

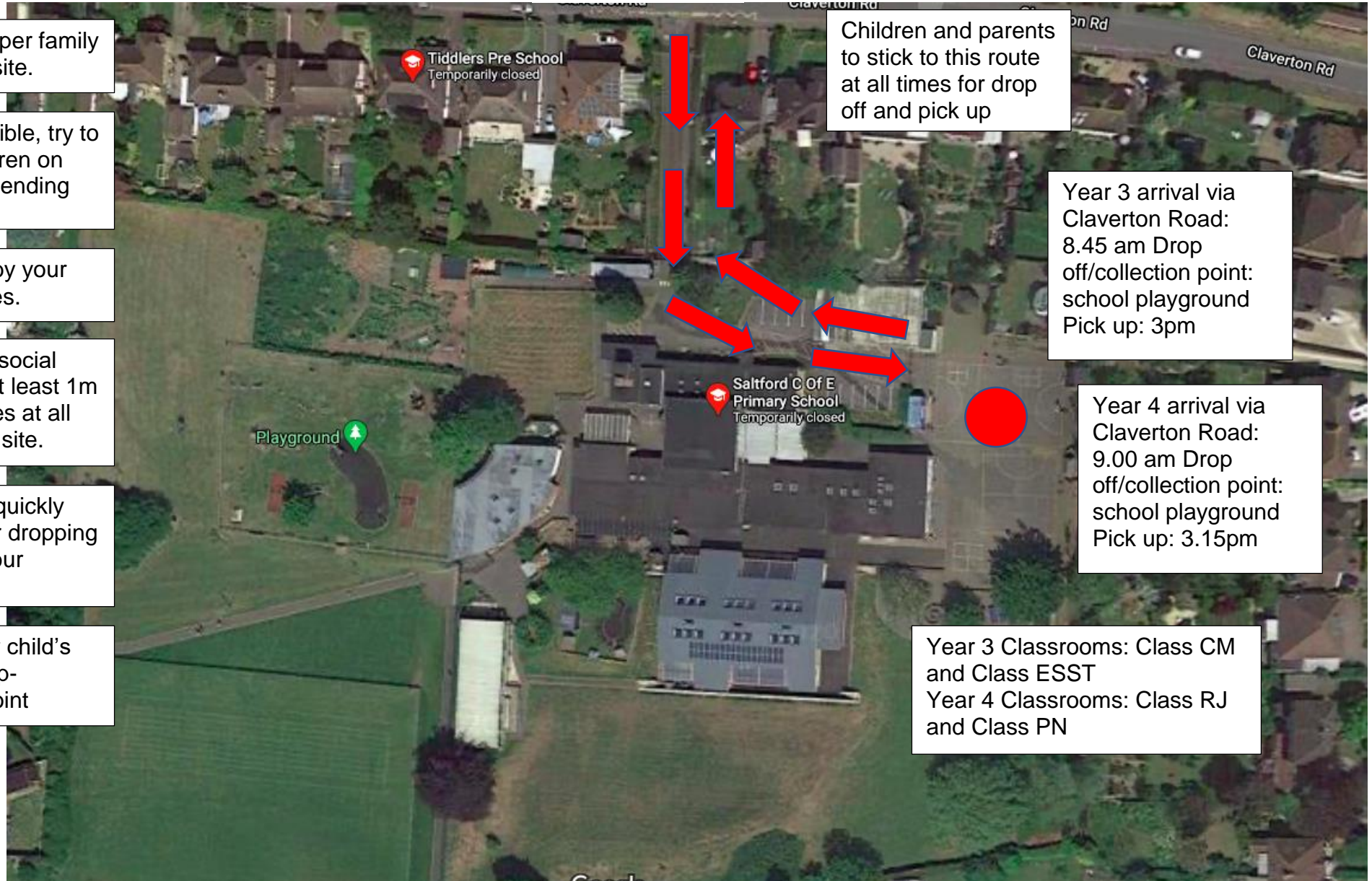
Only go to your child's designated drop-off/collection point

Children and parents to stick to this route at all times for drop off and pick up

Year 3 arrival via Claverton Road:
8.45 am Drop off/collection point: school playground
Pick up: 3pm

Year 4 arrival via Claverton Road:
9.00 am Drop off/collection point: school playground
Pick up: 3.15pm

Year 3 Classrooms: Class CM and Class ESST
Year 4 Classrooms: Class RJ and Class PN



Claverton Road, Saltford, Bristol, BS31 1DW Tel: 01225 872185
Email: contactus@saltfordschool.org.uk www.saltfordschool.org.uk
Headteacher: Mrs D Sage

Claverton Road, Saltford, Bristol, BS31 1DW Tel: 01225 872185
Email: contactus@saltfordschool.org.uk www.saltfordschool.org.uk
Headteacher: Mrs D Sage